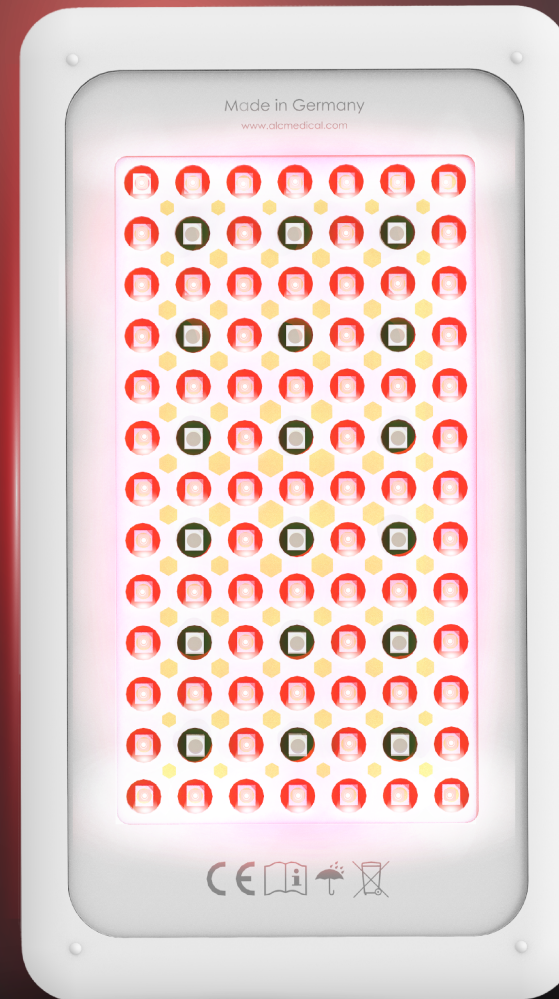


HOW TO USE BEYOND



PREPARATION PHASE

Before starting the application

BEYOND applications require a careful preparation. It is recommended to create an ideal environment where the program application can be administered with utmost care and attention.

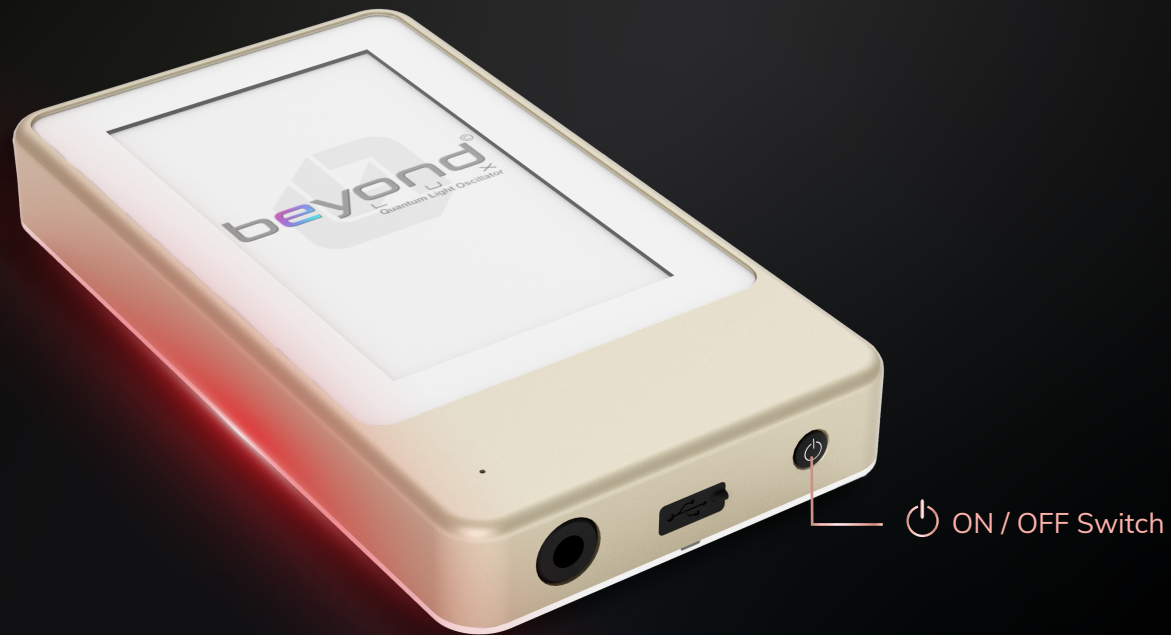
Relaxation is key to better treatment. Therefore, it is recommended that the application is made when users in a relax state. Relaxation allows body to both assimilate and reutilize the signals more efficiently in reoptimizing body's regeneration capacity.

It is suggested that people subject to BEYOND treatment application sit or lay down in a comfortable position and relax before the application.



01
STEP

Please **Switch-ON** the device by pressing the **ON/OFF** button at the right-bottom of the device. The startup screen will appear within a few seconds after the switch ON and the device is ready for use.



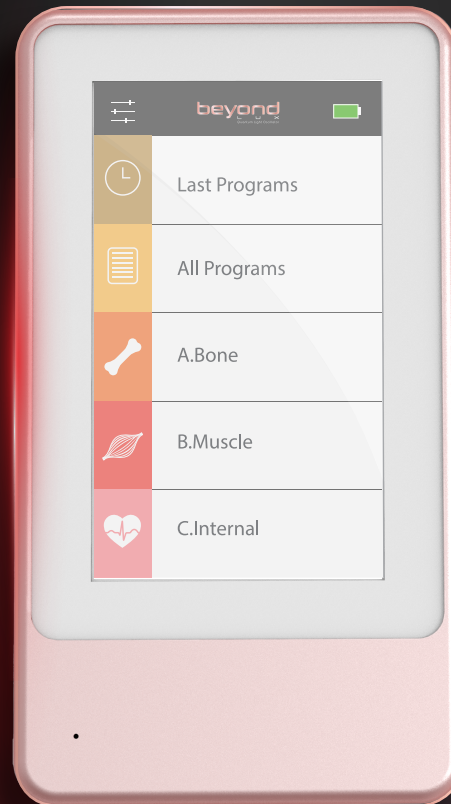
02 STEP

Program Categories are listed in the main menu. A list of application program lists in the selected category will appear when a category is selected.

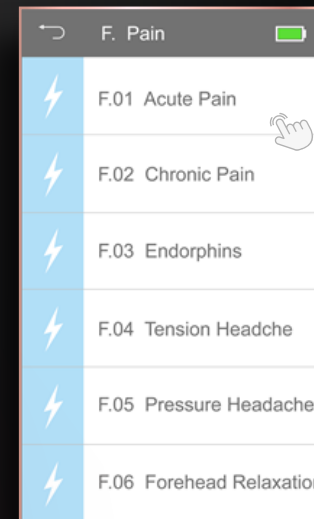
Application screen will appear after requested program is selected. Press **START** (play button) to initiate the testing and measurement for application.



Start Screen



Main Menu



Program Selection

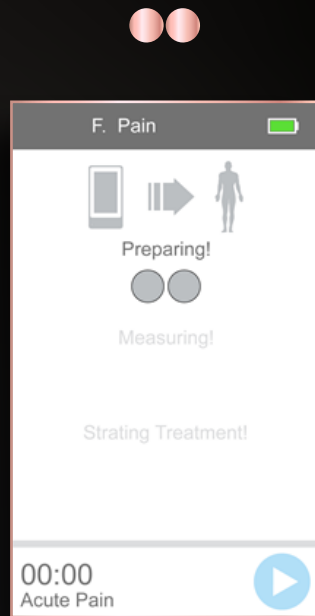


Start Button

03 STEP

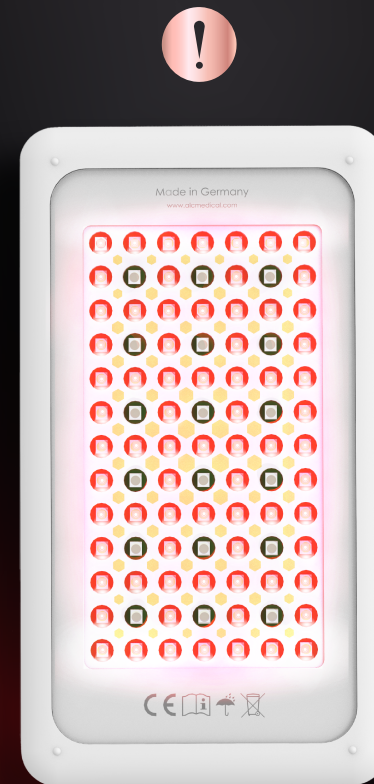
BEYOND shall be placed on required body part intended to be treated before initial auto-scanning.

The device automatically starts once the 10-second initial auto-scanning is completed.



Measurement - Preparation

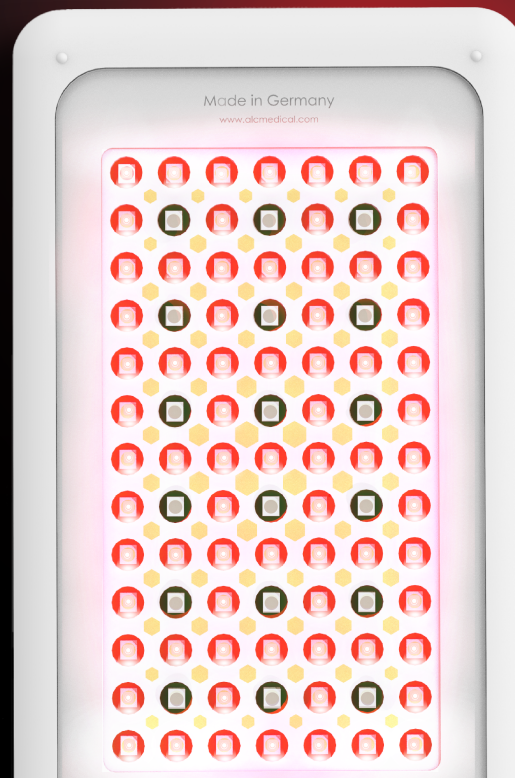
BEYOND shall be placed on the body where the face with LED Light Panel is in full contact with skin. Please, place BEYOND where the application intended to be made.



04
STEP

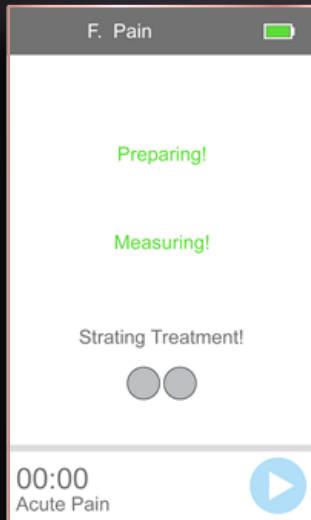


The face with LED Light Panel of BEYOND should be placed where the application is intended to be made.

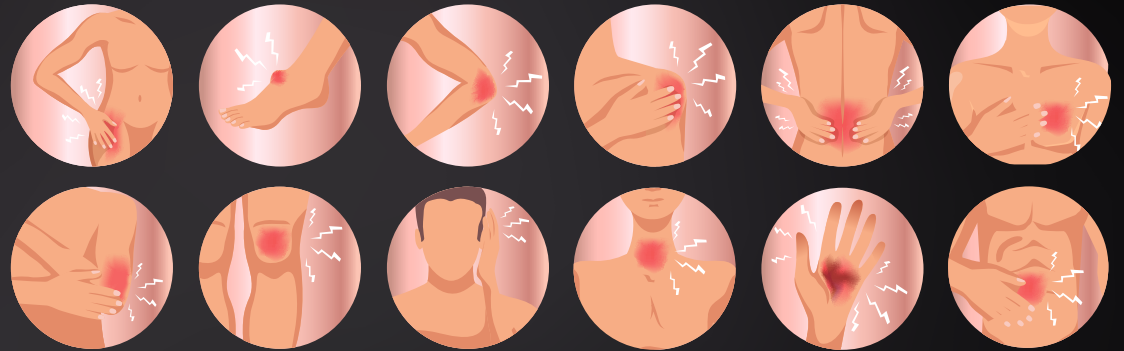


05 STEP

The application starts automatically once the 10-second auto-scanning is completed.



Measurement -
Start the Application



Please, place BEYOND where the application is intended to be made.

For instance, on your leg, on your head, or any part of your body where the application is needed.



06 STEP

BEYOND assesses required duration for selected program providing personalized time frame for every individual through its self-adapting capability. A countdown on the timer starts to progress throughout the application.



A signal with 10-consecutive beeping sound will indicate that the application is completed.



07
STEP



Please press the **STOP** button to terminate the application and press the button with **RETURN** icon to return to the previous menu.



beyond
L U X
Quantum Light Oscillator

HOW TO USE BEYOND



ALC Cybernetics